



# OCEANSKYLAND EXPRESS LOGISTICS PRIVATE LIMITED

*Shipping Made Simple*

---

[www.oceanskyland.co/](http://www.oceanskyland.co/)

OCEANSKYLAND EXPRESS  
LOGISTICS PRIVATE LIMITED



# About us

OCEANSKYLAND EXPRESS LOGISTICS PRIVATE LIMITED (OEL) is a premier logistics company offering comprehensive end-to-end solutions tailored to meet our clients' logistics and transportation needs.

Specializing in reefer services and cold chain systems, we excel in providing logistics solutions, warehousing, freight forwarding, customs clearance, road transportation, and advanced cold management systems. With a commitment to reliability and efficiency, we ensure seamless operations, delivering unparalleled reefer solutions to our valued clientele. Trust OCEANSKYLAND EXPRESS LOGISTICS for innovative logistics solutions that exceed expectations and drive success in today's dynamic global marketplace.

## MISSION

*Our mission is to deliver a positive, reliable experience to each and every one of our clients while offering exceptional value in the marketplace and setting the standard for professionalism in the logistic solutions we provide. In addition to operating our business profitably, we strive to operate it responsibly both for our clients and our employees, for whom our goal is to provide a safe and secure work environment.*

---

## VISION

*Our aim is to act as an indispensable partner to our clients by helping them build and maximize sustainable competitive advantages. We do this by helping them get their products to market quickly, efficiently, and safely. In addition to our expertly crafted and reliably delivered logistics solutions, our clients can rest assured that every interaction will be driven by integrity and respect, the fundamental principles of our business.*

# Challenges Transformed Innovative Solutions

## PROBLEMS

- **Inefficiency in Logistics Processes**

Businesses struggle with cumbersome and time-consuming logistics operations, leading to delays and increased costs.

- **Limited Visibility in Supply Chain:**

Lack of transparency in the supply chain is a common challenge, causing uncertainties and hindering effective decision-making.

- **Fragmented Logistics Solutions:**

Many businesses face challenges in coordinating fragmented logistics services, resulting in a disjointed and less optimized supply chain.

## INPUTS

- *End-to-end freight solutions.*

- *Specialized Reefer Services*

- *Comprehensive Logistics Support*

- *Efficient Cold Chain Management*

## SOLUTION

- **Streamlined and Efficient Processes:**

Reduced inefficiencies, faster cargo movement, and minimized operational costs for businesses.

- **Real-time Tracking and Visibility:**

Improved decision-making, enhanced customer trust, and a proactive approach to potential issues.

- **End-to-End Logistics Solutions:**

Businesses enjoy a one-stop-shop for all their logistics needs, eliminating the challenges of coordinating fragmented services.

# Services



## LOGISTICS SOLUTION

---

We provide a wide range of supply chain solutions and logistic management services.



## FREIGHT FORWARDING

---

*The planning and delivery of commodities utilizing one or more carriers from one location to another is known as freight forwarding.*



## CUSTOMS CLEARANCE

---

Basically, preparing and submitting the paperwork needed to export or import goods into or out of a nation constitutes customs clearance.



# Services



## ROAD TRANSPORTING

---

Road transport refers to moving people and products between locations via roadways.



## COLD MANAGMENT SYSTEM

---

*The handling of items while they are in transportation, processing, storing, and exhibiting is known as cold chain management.*



## REEFER SOLUTION

---

The biggest independent provider of reefer services is CReefer Solutions. They offer everything from workshops and training to PTIs, modifications, and service calls.



## **Scale Up Strategy**

### **Expand International Presence:**

- Develop a broader global network through partnerships and strategic alliances, enhancing reach and efficiency in international freight forwarding.

### **Advanced Technologies :**

- Upgrade logistics platforms with AI and automation, particularly in warehousing and cold chain management, to boost operational efficiency and accuracy.

### **Eco-Friendly Practices:**

- Focus on sustainable logistics solutions and strict compliance with international regulations to attract eco-conscious clients and expand market access.

**Food and Beverage Industry**

**Pharmaceutical Companies**

**Perishable Goods Suppliers**

**Retail Chains & Manufacturing Sector**

**Logistics and Supply Chain Managers**

**Global Importers and Exporters**

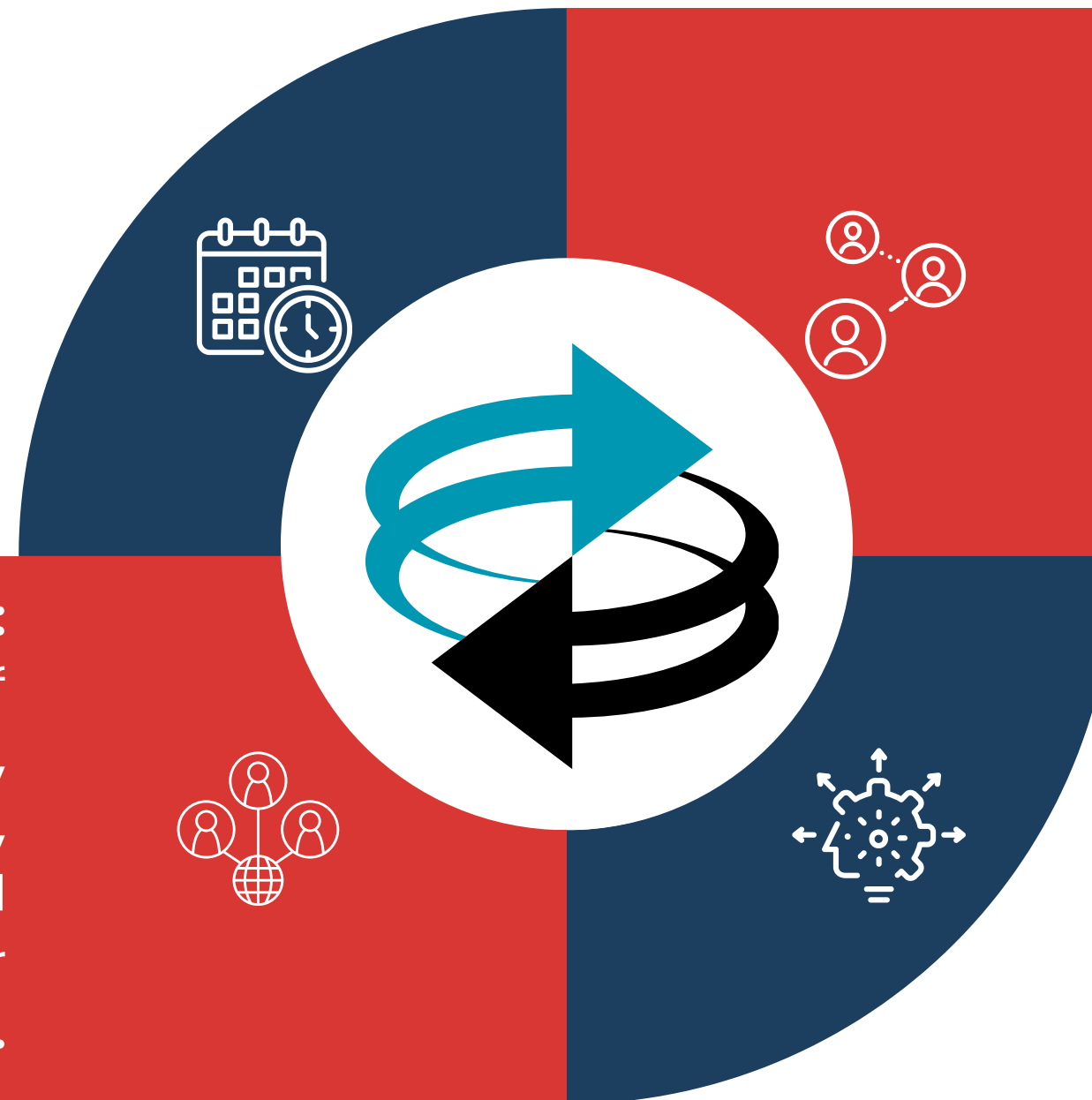






- **Specialized Reefer Services:** Expertise in managing refrigerated cargo ensures optimal conditions for perishables throughout the supply chain, catering to niche markets like food and pharmaceuticals..

- **Integrated End-to-End Solutions:** Offering a complete package of services including logistics, warehousing, freight forwarding, customs clearance, and road transportation under one roof for convenience and efficiency.



- **Comprehensive Cold Chain Management:** Advanced cold management systems provide seamless temperature-controlled logistics solutions from origin to destination, critical for quality-sensitive shipments.
- **Robust Road Transporting Network:** Extensive road transporting capabilities facilitate reliable and flexible inland distribution, crucial for last-mile delivery effectiveness.



## **Customer Satisfaction**



Improve customer and stakeholder satisfaction through improving services through clear communication and collaboration.

## **Leadership**



Our Management brings together exceptional executives with a vision, fundamental beliefs, and vast expertise to deliver services. Develop dynamic leadership and strong ties with stakeholders.

## **Our Focus**



We have a critical mission, a clear path ahead, and the curiosity and courage to make a positive impact. Our mission is to connect you with trusted information and insights that spark your industrial ingenuity and help create a more sustainable future.



# Director's

**Subhas Chandra Sarkar**  
Chairman



**Bikram Sarkar**  
Managing Director





[oceanskyland.co/](http://oceanskyland.co/)

**Get in Touch:  
Connect with OCEANSKYLAND  
EXPRESS LOGISTICS for Inquiries.**

📞 +91 84203 88633

✉ [ael@oceanskyland.co](mailto:ael@oceanskyland.co)

16, INDIA EXCHANGE PLACE, 1st FLOOR  
ROOM NO: 17, KOLKATA - 700 001, INDIA.

